


ease-i

A product by  aplos ventures

HARNESS CLEAN ENERGY TO THE FULLEST

A100



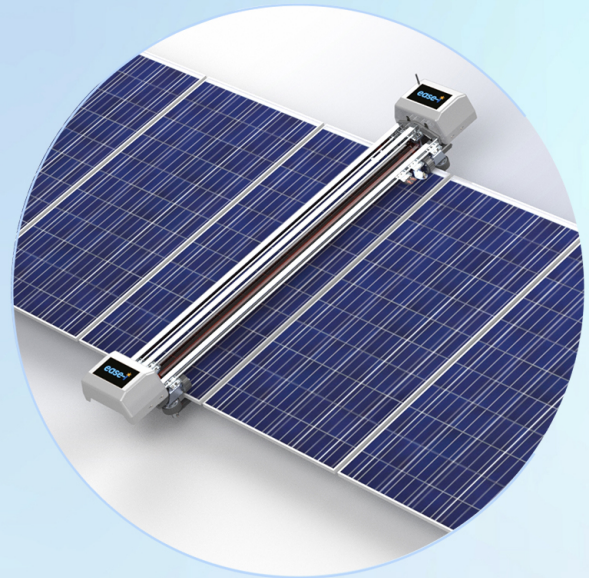


ABOUT aplos ventures

Aplos Ventures Private Limited is based in Navi Mumbai, Maharashtra. Its mission is to minimize the cost of cleaning of solar PV panels and reduce O&M expenses of solar PV Plants.

ABOUT ease-i A100

Aplos Ventures' new dry robotic cleaning equipment, ease-i A100 is a new age robot that aims to maximize energy generation, increase plant efficiency, and reduce O&M cost.



ADVANTAGES

- 01** Ultra-soft PBT bristles with water resistance properties enabling all weather operation
- 02** 4-wheel drive powertrain system
- 03** Automotive grade Aluminum frame
- 04** Entire system powered by new generation LFP battery technology
- 05** Minimum assembly on site thus saving commissioning deployment time
- 06** Lightweight & Durable design



A100 SPECIFICATIONS

DESCRIPTION	SPECIFICATION
Robot Model Name	ease-i A100
Robot Configuration	1P Autonomous
Frame Type	AL 6063 Monocoque Welded
Robot Weight	35 Kg (+/- 2 kg)
Cleaning Speed	15-18 meter/min
Table to Table Angular Difference Covered	+/- 10 degree
Distance Travelled per Single Charge	Upto 5 Km
Cleaning Method	Dry Cleaning
Cleaning Tilt	5-60 Degree
Installation Type	Fixed Tilt / Single Axis Tracker)1-in-portrait)
Wind Speed Resistance (Static)	47 m/s
Wind Speed Resistance (Operation)	15 m/s
IP Rating	IP 65
Corrosion Resistant Properties	Upto C4
Max Ambient Temp (Operation)	5 to 55 Degree
Drive System	4 drive BLDC motor & 1 Brush BLDC motor
Brush Type	Ultra-soft bristles
Charging Mechanism	Auxiliary Module; String tapping (optional)
Battery Type	Lithium Iron Phosphate (LFP) Battery
Communication	LoRa interface (for communication with master controller/gateway)
Health Monitoring Dashboard	Cloud Based Dashboard for health monitoring, predictive maintenance & schedule cleaning
Other Supporting structures	Docking, Reversing and Bridges



GET IN TOUCH



+91 99304 52750



info@aplosventures.com



www.aplosventures.com



Plot No PAP-R-280-283, TTC MIDC
Area, Rabale, Navi Mumbai - 400701